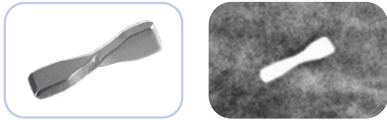


## Two Distinct Shapes

BOWTIE



U-SHAPE



Available in Titanium (nickel free) with visibility in Ultrasound, X-ray and MR.

## Compatibility

Core Needle in Ultrasound Procedures	
Direct Puncture - 14G	
Vacuum Assisted Biopsy Probe*	
<b>Mammotome</b>	Mammotome revolve - 8G & 10G
<b>Hologic</b>	Eviva®, Brevera® - 9G & 12G ATEC® - 9G & MRI
<b>Bard (BD)</b>	EnCor Enspire™, EnCor Ultra™ - 7G & 10G

\*See the Mammotome Marker compatibility brochure for more information

Please note: The CorMARK applicator is designed for use with core needles in ultrasound biopsies and MammoMARK applicators are designed for use through the back of a vacuum assisted biopsy probe.

### Mammotome

[www.mammotome.com](http://www.mammotome.com)

© 2021 Devicor Medical Products, Inc. All rights reserved. Devicor, Mammotome, Mammotome revolve, CorMARK and MammoMARK are registered trademarks of Devicor Medical Products, Inc., in the USA and optionally in other countries. Hologic, Eviva®, Brevera® and ATEC® are registered trademarks of Hologic, Inc. Bard, EnCor Enspire™ and EnCor Ultra™ are the product names, trade names and/or trademarks of C.R. Bard, Inc., and its affiliates including BD. Other logos, product and/or company names might be trademarks of their respective owners. MDM# 210311 Rev 4/21

## Mammotome Markers

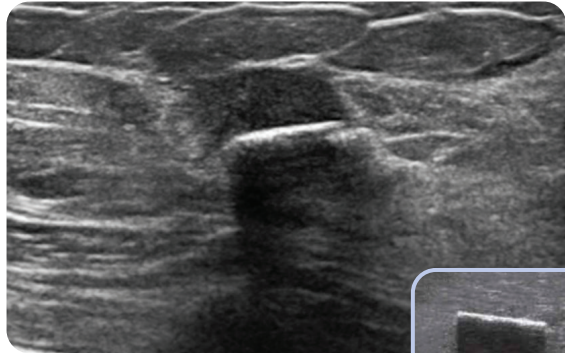


## MammoMARK/CorMARK

Breast Biopsy Site Identifier

## Highly Visible Under Ultrasound

MammoMARK is highly echogenic which allows for precise localization under ultrasound.<sup>1</sup>



Immediate deployment

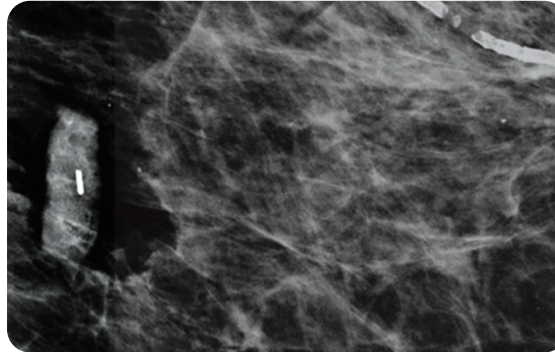


Immediate visibility

## Anti-Migration Technology

The collagen marker size increases by 300% within 60 seconds.<sup>2</sup>

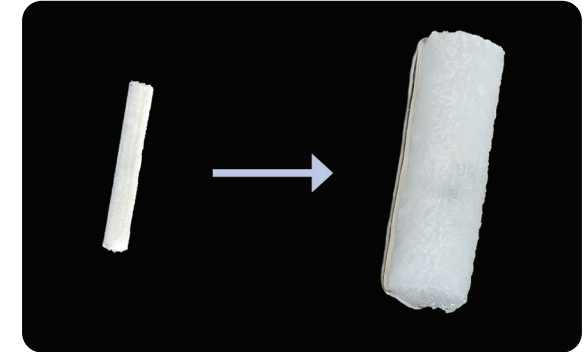
Provides precise placement in the tissue cavity.<sup>1</sup>



Immediate expansion

## Hemostatic Properties

MammoMARK/CorMARK marker can assist in fluid management by quickly absorbing surrounding fluid.<sup>2</sup>



Pre-Deployment

Post Deployment

1. Corsi F, Sorrentino L, Bossi D, Sartani A, Foschi D. Preoperative localization and surgical margins in conservative breast surgery. *Int J Surg Oncol*. 2013;2013:793819. doi:10.1155/2013/793819

2. Mammotome Internal Data

All photos courtesy of Kimberly C. Hutcherson, M.D., North Metropolitan Radiology Associates, LLP